

3DEXPERIENCE

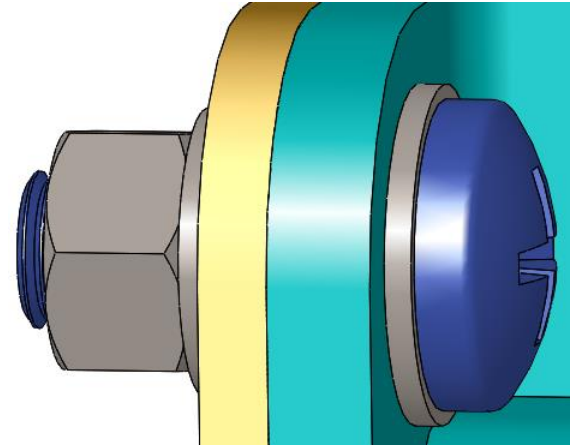
CAD Instructor Guide

Lesson 5


Dr. Ali Almandeel

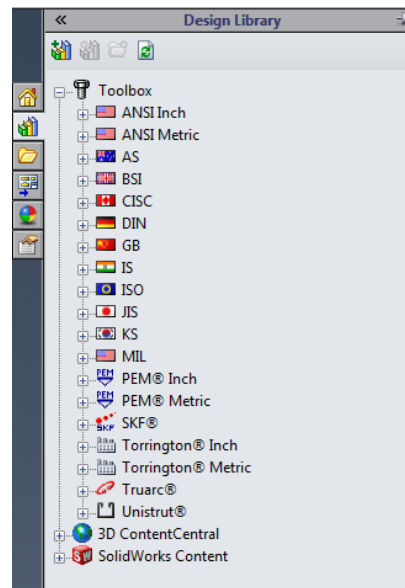
What is Toolbox?

- ▶ Ready-to-use standard parts such as bolts, screws, washers, lock washers, and so forth.
- ▶ Eliminates the need to model most fasteners and many other standard parts.
- ▶ Easy drag-and-drop placement.



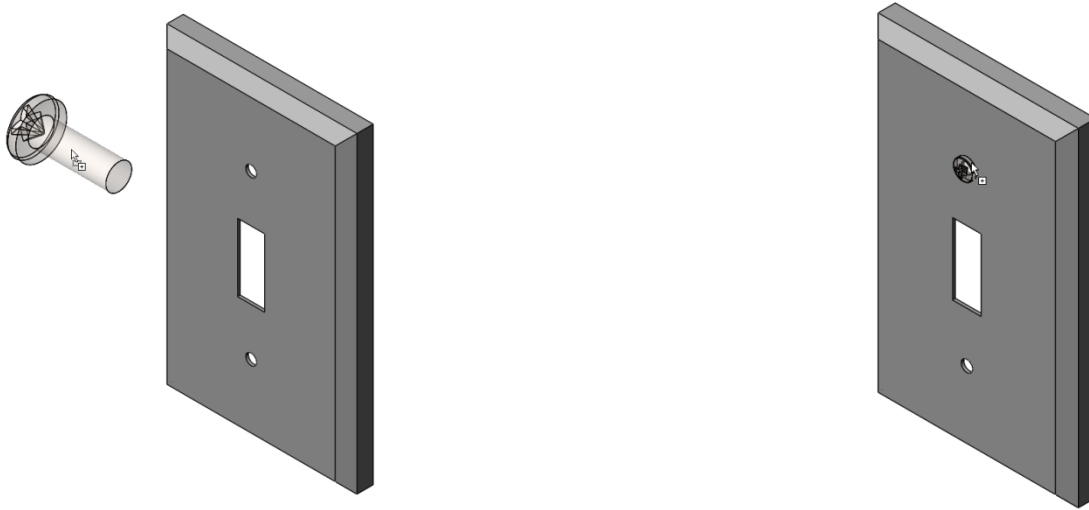
Toolbox Browser

- ▶ Browser containing libraries of ready-to-use components.
- ▶ Click  to access Toolbox Browser.
- ▶ Contains libraries of ready-to-use parts.



Easy Drag-and-Drop Placement

- ▶ Drag from Toolbox Browser
- ▶ Snap to assembly



Mate Relationships Defined at Placement

- ▶ When the Toolbox part snaps to the assembly, the mate relationship between the Toolbox part and the other part is established.
- ▶ When using washers, place them first. Subsequent hardware — like screws and nuts — mate to the washers.

Standard Hardware Matches - Standard Holes

- ▶ Hardware placed on holes created using the Hole Wizard is appropriately sized.
- ▶ Standard sized parts help to keep your designs realistic.

Specifying Toolbox Part Properties

Change part properties to customize the hardware to your design.

- Specify the properties as you are placing the part.
- Ability to change the properties after the part is placed.

Configure Component ?

✓ ✗

Part Numbers

Part Number Unassigned

Add Edit Delete

Properties

Size: #0-80

Length: 0.625

Drive Type: Cross

Thread Length: 0.625

Thread Display: Simplified

Diameter: 0.06

Comment:

Configuration Name: CR-FHM1 0.06-80x0.625x0.625-N

Options

Autosize to mated geometry

Thread Display

- ▷ Simplified — Represents the hardware with few details. Most common display.
- ▷ Cosmetic — Represents some details of the hardware.
- ▷ Schematic — Very detailed display which is used for unusual or custom designed hardware.



Supported Standards

Toolbox supports international standards

- ▷ ANSI
- ▷ AS
- ▷ BSI
- ▷ CISC
- ▷ DIN
- ▷ GB
- ▷ IS
- ▷ ISO
- ▷ JIS
- ▷ KS
- ▷ MIL

Libraries from Leading Manufacturers

Toolbox contains standard parts libraries from leading manufacturers such as:

- ▷ PEM®
- ▷ Torrington®
- ▷ Truarc®
- ▷ SKF®
- ▷ Unistrut®